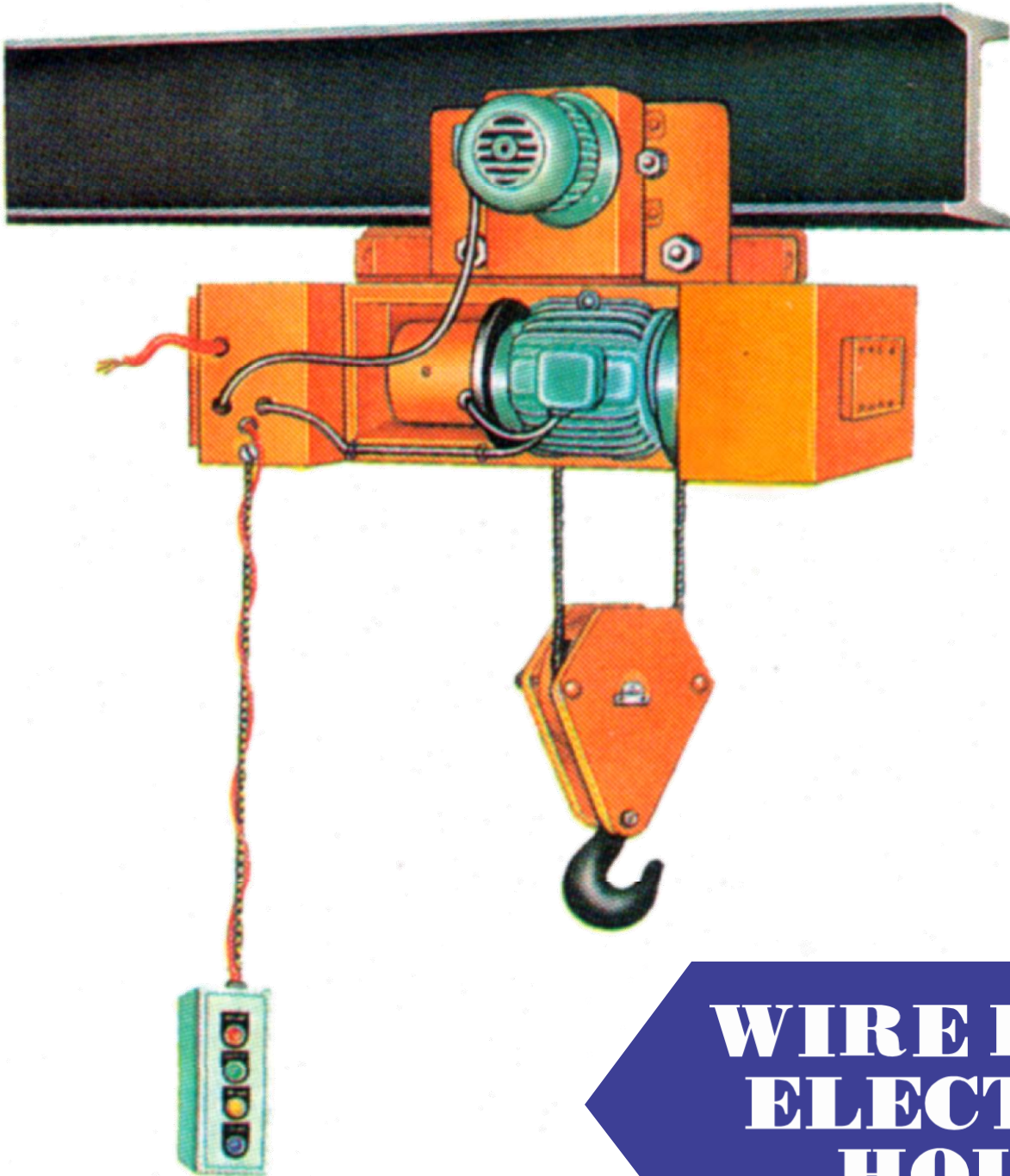


MATERIAL HANDLING EQUIPMENTS



WIRE ROPE ELECTRIC HOIST

The Reliable Solution for
Your Lifting & Lowering
Problem

www.globeoverseas.org

SALIENT FEATURES :

DESIGN :

"GLOBE" Electric Wire Rope Hoist are designed as per IS: 3938-1983 and are suitable for Medium & Heavy duty applications.

CONSTRUCTION :

"GLOBE" Hoist have a unique modular construction which makes them an ideal choice since each sub assembly is easily accessible individually, thus reducing the time and cost involved in the maintenance..

ROPE DRUM :

Rope Drum is fabricated out of mild steel or seamless tube and is machined and grooved in accordance with IS : 3938 to accommodate full length of wire rope in one layer.

GEAR BOX :

Totally enclosed, immersed oil bath lubricated gear box houses the gear machined out of EN-9/EN-24 Steel and teathed on precision hobbing/gear shaper machines.

MOTORS :

Hoist duty 415 V. 50 Hz, 3 PH. A.C., Squirrel cage motors with 40% CDF 'B' class insulation and ample rating and standard make like NGEF / CGL / BHARAT BIJLEE / ABB etc. are used.

HOOK :

Confirming to IS : 15560/2005. Free to rotate & swivel.

BRAKE :

Instant action 'Fail to Safe' Electro Megnetic auto manual DISC/SHOE ensure maximum safety and reliability in operation.

WIRE ROPE :

6 x 36 construction, FMC, best plough steel tested wire rope as per IS : 2266 is used of reputed make like Usha Martin / Mahadev etc.

LIMIT SWITCH :

Snap Action limits switch to prevent over hoisting and over lowering is provided for maximum safety, make STS / AVON Etc.

PANEL :

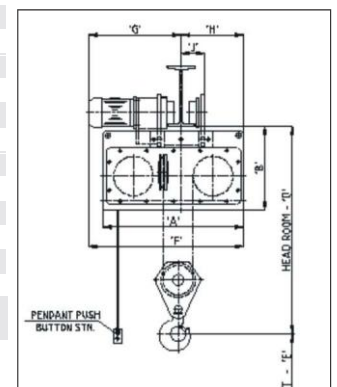
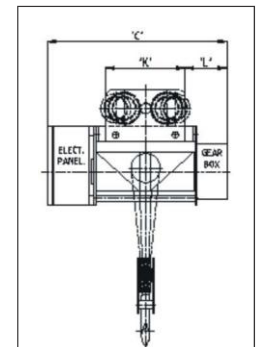
Totally enclosed, dust vermin proof housing components of standard makes like 'ABB / SIEMENS / SCHNEIDER' ETC., provided control at low voltage for safety of operator.

CONTROL :

From push button pendent station supported with steel link Chain / Wire Rope, operating at 110 Volt.

Specifications Table (Electric Wire Rope Hoist With Electric Trolley)

Model	GWH-M0	GWH-M1	GWH-M1	GWH-M2	GWH-M2	GWH-M2	GWH-M3	GWH-M3	GWH-M4	GWH-M4
Hoist Type	All Operations Electrical (AOE)									
Rated Load (T)	0.5	1	2	2	3	4	5	7.5	10	12.5
Lift (M)	5	6	6	6	6	6	6	6	6	6
Hoisting speed (MPM)	6	6	3	4	3	3	3	3	3	3
Hoisting motor (KW)	0.74	1.4	1.4	2.2	2.2	3.7	3.7	5.5	7.4	9.3
Traversing speed-MPM	15	15	15	15	15	15	15	15	15	15
Traversing Motor (KW)	0.37	0.37	0.37	0.37	0.37	0.37	0.74	0.74	0.74	0.74
Motor Specifications	40 % CDF, 15 0 Starts/ Hr, 50 Hz, 415V, 3 Phase, AC, Squirrel Cage Ind uction Motor									
No. of rats (rope)	2	2	4	2	4	4	4	4	4	4
Rope Diameter (MM)	8	8	8	10	10	12	12	14	16	18
Rope Construction	6 x 36/37, Fibre Core (FMC), 1770 N/MM Sq., Ungalvanised									
Approx. Weight (Kg.)	160	216	240	400	460	540	800	900	1200	1350
Dimensions in MM A	390	530	530	720	720	720	830	830	1000	1000
B	300	380	380	460	460	460	585	585	655	655
C	720	830	1050	1040	1040	1040	1090	1090	1200	1350
D	700	750	920	950	1000	1100	1200	1250	1400	1500
E	5000	6000	6000	6000	6000	6000	6000	6000	6000	6000
F	600	740	750	840	840	840	940	940	1060	1060
G	385	425	425	475	475	475	480	480	500	500
H	200	290	300	360	360	360	415	415	500	500
J	115	125	125	150	150	150	175	175	175	175
K	300	380	380	400	400	400	580	580	580	580
L	265	260	260	375	375	375	280	280	315	320
Recommended ISMB Sizes (MM)	150 x 75 to 200 x 100		200 x 100 to 350 x 140			250 x 125 to 450 x 150		300 x 140 to 600 x 210		



OUR OTHER PRODUCTS : E.O.T. CRANE, H.O.T. CRANE, GANTRY CRANE, JIB CRANE, POWER WINCH, GOODS LIFT, CHAIN ELECTRIC HOIST, CHAIN PULLEY BLOCK, CRAB WINCH, TROLLEY, HYD. PALLET TRUCK, HYD. JIB CRANE, HYD. STACKER, HYD. LIFTING TABLE.



GLOBE OVERSEAS PVT. LTD.

Regd Office : B-9, DSII DC Engineering Complex, Mangolpuri Industrial Area, Phase-I, New Delhi- 110083, Tel. : 011-46802215, Mobile No. 9811628456

Email: goplseas@gmail.com

Works : F-76, Sector-2, DSII DC, Industrial Complex, Bawana, New Delhi-110039 Tel. : 011-20876080, Mobile No. 9811025113

In accordance with our policy of progressive improvement the right is reserved to alter any details of price, specification and dimension without notice.